



TABE Complete Language Assessment System—English Better English Skills for Life



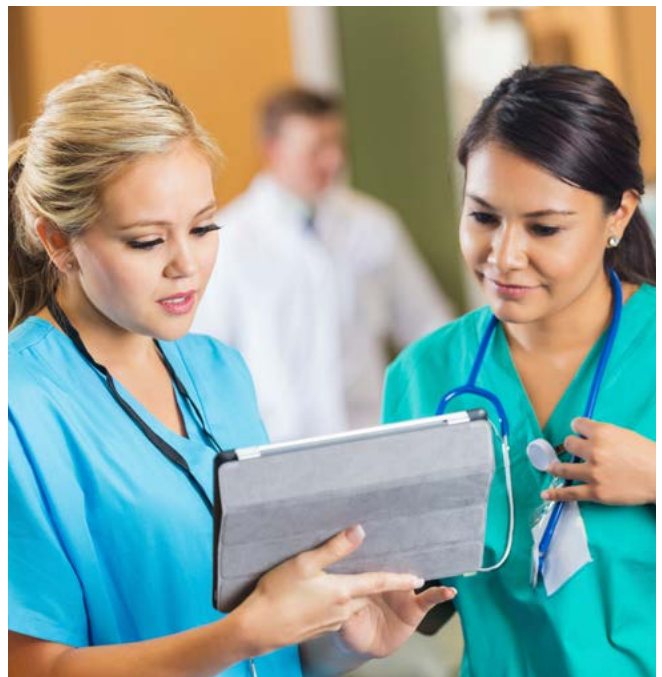
TABE CLAS-E

TABE Complete Language Assessment System—English™ is an integrated system of assessments, instructional guidance, and staff development materials designed to measure adult learners' English language proficiency and aid in transitioning learners into mainstream education programs or career paths.

TABE CLAS-E™ provides you with the resources to assess the language proficiency of adult English language learners in the areas of reading, listening, writing, and speaking. Scores are linked to TABE® 9&10, which helps ease your students' transition into the nation's leading adult basic education programs.

The items and passages in TABE CLAS-E focus on workplace, community, and education contexts that are practical and familiar and that will motivate adult learners. The TABE CLAS-E items are aligned with the NRS English as a Second Language (ESL) Educational Functioning Level Descriptors, Student Performance Levels, and several state standards for English language proficiency. TABE CLAS-E makes it easy for you to pinpoint student strengths and areas of opportunity and to demonstrate student gains for NRS reporting purposes.

- Accurately measures student gains
- Aligns to key adult education ESL standards
- Reliably measures gains in learning
- Offers computer-based scoring
- Integrates assessment, instruction, and assessed development
- Assesses English language competencies in reading, listening, writing, and speaking





TABE CLAS–E

TABE CLAS–E provides you with the resources to assess the language proficiency of adult English language learners

TABE Complete Language Assessment System—English assesses adults’ English proficiency levels

TABE CLAS–E accurately predicts to the appropriate level of Data Recognition Corporation's Tests of Adult Basic Education, TABE 9&10. This link provides a seamless and successful transition from an English Language Learning class to an Adult Basic Education Program.

Features

- Locator Test for accurate initial placement
- Easy computer-based local scoring
- Proven, research-based test questions
- Scale score, NRS ESL scores, and Student Performance Levels
- Links to instructional materials from several vendors
- Assesses English language competencies as well as often-ignored grammar standards
- Instructional staff guidance materials designed for classes with learners at different proficiency levels
- Interactive staff development DVD for individual or group training sessions

TABE CLAS–E Score Reports

Get a complete picture of the skill level and progress of your students with these score reports:

- Individual Student Report
- Item Analysis Report
- Pre- and Post-Test Report
- Prescriptive Report
- Group List Report
- Assessment Summary Report
- Rank List Report

To learn more, please call 800.538.9547 or visit www.tabetest.com

6007 (8/17)