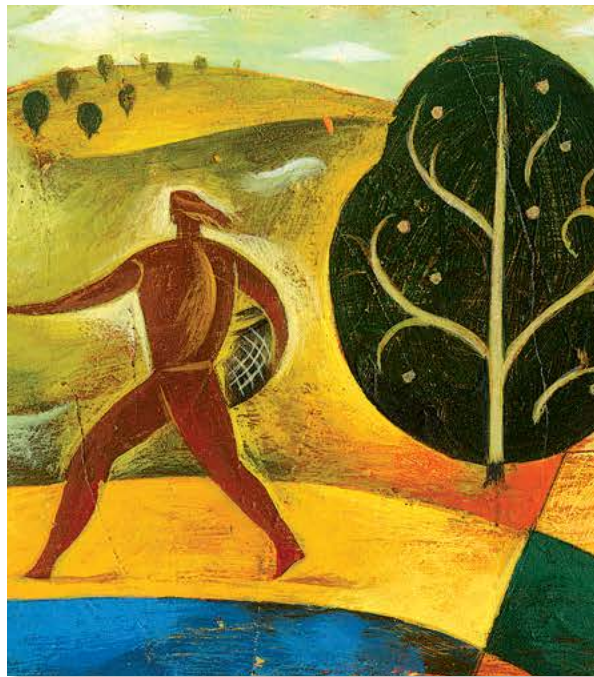




Mathematics

TABE measures mathematics skills in the contexts that are most important to adults: life skills, work, and education. TABE 9&10 uses three separate mathematics tests to measure these life skills: Mathematics Computation, Applied Mathematics, and an Advanced-Level Test in Algebra/Geometry. Scores can be combined to provide a total mathematics score. Only criterion-referenced scores can be produced for the Survey Mathematics Computation test. All mathematics tests in TABE 9&10 measure a wide range of skills from simple concepts through advanced-level material.



Mathematics

Mathematics Computation

The Mathematics Computation test addresses the range of low- to high-order operations and provides an appropriate representation of the core computation skills necessary to any successful mathematics program.

1

$$\begin{array}{r} 32 \\ \times 3 \\ \hline \end{array}$$

A 96
B 66
C 65
D 99
E None of these

2

$$\begin{array}{r} \frac{2}{7} \\ + \frac{3}{7} \\ \hline \end{array}$$

A $1\frac{5}{7}$
B $\frac{5}{14}$
C $\frac{5}{7}$
D $\frac{6}{7}$
E None of these

3

What is 25% of 100 ?

A 2.5
B 4
C 25
D 40
E None of these

4

$$1^3 + 3^3 =$$

A 28
B 12
C 10
D 64
E None of these

Level E

Item	Objective	Description
1	Multiply Whole Numbers	Multiply by one digit with no regrouping.

Level M

Item	Objective	Description
2	Fractions	Add fractions with no common denominators.

Level D

Item	Objective	Description
3	Percents	Find the percent of a number.

Level A

Item	Objective	Description
4	Algebraic Operations	Compute with exponents.





Mathematics

Applied Mathematics

The Applied Mathematics test presents items in contexts that adults find familiar and meaningful. For example, items may be based on household repair tasks, recipes, comparison shopping, or household budgets. Examinees have the opportunity to demonstrate their abilities in the contexts they know best.

Like the Reading test, the Applied Mathematics test includes items that test document and quantitative literacy. These items are built on common, familiar documents that adults are exposed to in their daily lives, such as sales receipts, schedules, and maps.

Level E

Battery Prices Display

Familiar content is used to measure consumer skills.

Item	Objective	Description
1	Number and Number Operations	Item 1 requires the ability to compare and order numbers in a table.
2		Item 2 utilizes the understanding of operations to solve a problem.
3	Problem Solving and Reasoning	Computation skills are applied to solve a simple problem.

The table shows car battery prices at an automotive repair shop. Study the table. Then do Numbers 1 through 3.

Battery Prices

Model	Price	Guarantee
Value	\$50.00	30 months
Special	\$65.00	36 months
Sure-Start	\$70.00	48 months
DeLuxe	\$75.00	48 months
Arctic	\$85.00	60 months

- Which of these car batteries is the most expensive?
A Value
B Arctic
C Special
D DeLuxe
- Which of these expressions can be used to find the total cost of three DeLuxe batteries?
F $\$75.00 \cdot 3$
G $\$75.00 \cdot 3$
H $\$75.00 \cdot 3$
J $\$75.00 \cdot 3$
- Lee selected the least expensive car battery he could buy with a 48-month guarantee. He also received a \$10 discount. How much did he pay for the new battery?
A \$40.00
B \$60.00
C \$65.00
D \$70.00

Mathematics

Applied Mathematics

Reliable Cable provides cable TV service to houses and businesses. They bill monthly for their services. Study the Statement of Service. Then do Numbers 1 through 5.

Reliable Cable Service

Statement of Service from 4/01 to 4/30	
Installation Fee	\$73.25
Monthly Charges	\$32.95
Balance Due	<input type="text"/>

- 1 Which of the following is the correct amount to enter in the Balance Due box?
- A \$40.30
 - B \$105.20
 - C \$106.20
 - D \$146.50
- 2 What month of service is covered by the Statement of Service from Reliable Cable?
- F October
 - G January
 - H June
 - J April
- 3 To the nearest dollar, what does Reliable Cable charge for one month of service?
- A \$30
 - B \$33
 - C \$40
 - D \$73
- 4 How much will a customer pay for 6 months of service from Reliable Cable?
- F \$182.40
 - G \$187.70
 - H \$195.40
 - J \$197.70
- 5 The Statement of Service covers a full month of cable service. About how much does Reliable Cable service cost per day?
- A \$0.32
 - B \$1.00
 - C \$10.00
 - D \$33.00

Level M

Reliable Cable Service Display

Computation and estimation skills are applied to everyday experiences.

Item	Objective	Description
1	Computation in Context	Data are computed to solve consumer problems.
4		
2	Measurement	This item employs the understanding of data symbolization.
3		
5	Estimation	Estimation skills are applied using data from a table.

